

# Stream Drinking Water Systems

Thank you for choosing a Stream filtration system. It is our commitment to provide our valued customers the very best in water quality and we look forward to serving you for many years. Here's how to connect Stream and begin enjoying quality water for less.

---

## Table of Contents

**Sec.  
01****General Information, 3**

- A. Operation & Maintenance Specifications
- B. Installation Overview & Parts

**Sec.  
06****Connecting the Drinking Water System, 12**

- A. Adapter Connection
- B. Tubing Connection
- C. Ice Maker Connection
- D. Placing Stream Flow Plus Under the Sink

**Sec.  
02****Preparing the Housing, 5**

- A. Filter Cartridge Installation

**Sec.  
07****Start-up and Use, 14**

- A. Filter Life

**Sec.  
03****Below the Sink Installation, 6**

- A. Required Tool List
- B. Attaching the Adapters to the Housing
- C. Housing Assembly

**Sec.  
08****Performance Testing, 15****Sec.  
04****Installing the Faucet, 8**

- A. Drilling the Hole
- B. Mounting the Faucet

**Sec.  
09****Performance Data Sheets, 16**

- A. Aesthetic Effects
- B. Operational Specifications
- C. California Certification

**Sec.  
05****Connect to Plumbing, 10****Sec.  
10****Troubleshooting & FAQs, 20**

- A. Troubleshooting & FAQs
- B. Maintenance Problems

**Stream Laboratories, Inc.**  
2520 Shell Road Ste B  
Georgetown, TX 78628

# General Information

## A. Operation & Maintenance Specifications

<b>Model Number:</b>	Stream Flow Plus (FP1)
<b>Replacement Filter Type:</b>	Stream Flow Plus Cartridge Part (FC1)
<b>Housing Composition:</b>	Stainless Steel
<b>Rubber Items:</b>	Nitrile
<b>Approximate Filter Capacity:</b>	750 gallons
<b>Approximate Flow Rate at 60 psi:</b>	0.75 gpm
<b>Maximum Working Pressure:</b>	100 psi / 8.8 kg/cm <sup>2</sup>
<b>Minimum Working Pressure:</b>	30 psi / 2.1 kg/cm <sup>2</sup>
<b>Maximum Operating Temperature:</b>	100° F / 38° C for cold water use only
<b>Minimum Operating Temperature:</b>	32° F / 0° C for cold water use only
<b>Inlet:</b>	1/4" NPTF x 1/4" tube
<b>Outlet:</b>	1/4" NPTF x 1/4" tube
<b>Particle Retention Size:</b>	sub micron (0.5 micron)
<b>Certified by:</b>	NSF International , CA Dept. of Public Health : Cert: #13-2190

## Notes

1. The Stream Flow Plus Drinking Water System is installed below the sink and connects to a separate faucet included in the installation materials.

2. Replacement filters can be purchased from your dealer. Filter life will vary in proportion to the amount of water used and the level of impurities in the water being processed. Replace the filter cartridge when the first of the following occurs: (a) annually; (b) when the system's rated capacity is reached; (c) the flow rate diminishes; or (d) the filter becomes saturated with bad tastes and odors. The rated capacity of the filter cartridges is shown above.

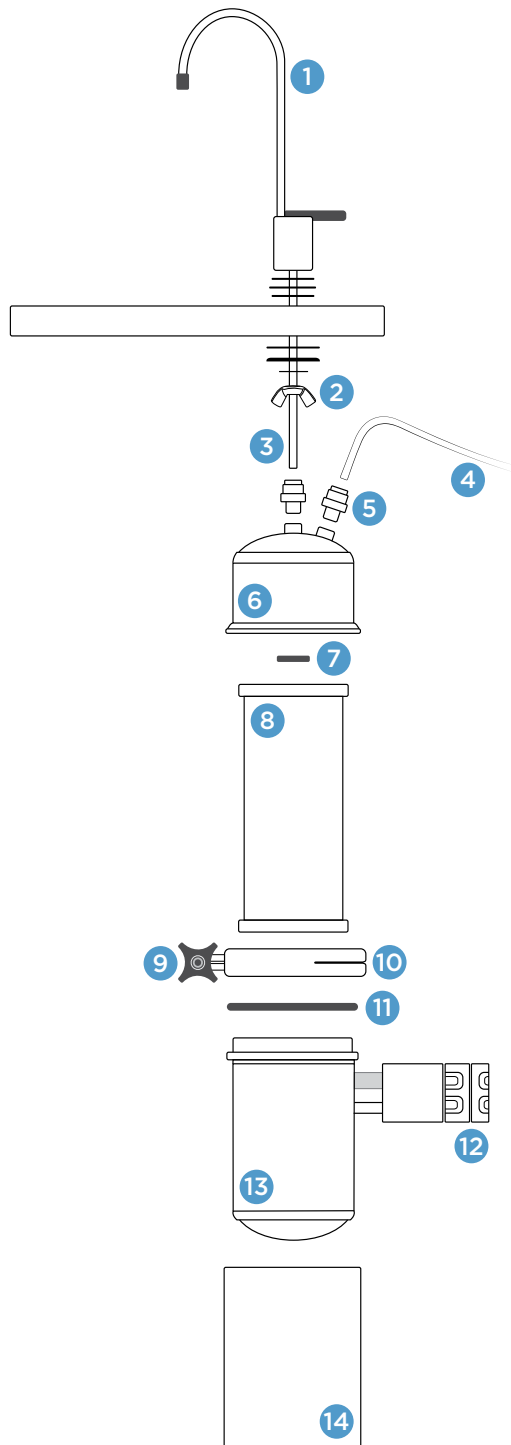
3. This system is not intended to be used where the water is microbiologically unsafe or with water of unknown quality without adequate disinfection before or after the unit. Systems certified for cyst reduction may be used on disinfected waters that may contain filterable cysts.

4. Do not allow water to freeze in the unit. If unit is exposed to freezing temperatures, drain water from unit and remove filter.

5. Do not allow water to sit in unit for extended periods of time (10 or more days) without being used. If unit is to be left unused for more than 10 days, drain all water from the system and remove the filter. Upon your return, reconnect the filter in the housing and continue use. In the event water does sit in the unit for 10 or more days, the system should be flushed by allowing water to flow to waste for about 3 minutes; then continue use as normal.

6. To dispose of the used filter, remove it from the housing and place the old filter in your normal refuse.

## B. Installation Overview & Parts



- 1 Faucet Assembly (with blue tubing attached\*)
- 2 Wing Nut
- 3 Blue Tubing (connects outlet adapter to plumbing)
- 4 Clear Tubing (connects inlet adapter to plumbing)
- 5 Inlet and Outlet Adapters
- 6 Housing Top
- 7 Black Rubber Cushion (inside housing top)
- 8 Carbon Block Filter
- 9 V-band Knob
- 10 V-band
- 11 O-ring
- 12 Wall Bracket
- 13 Housing Bottom
- 14 Acrylic Sleeve

Stream Drinking Water Systems have been tested and certified, so you know that they will perform at the highest level possible. Please read this manual before installing your Stream Flow Plus System, as installation, operation, and maintenance will aid in your System's performance. Not following these instructions carefully could lead to product failure or possible damage.

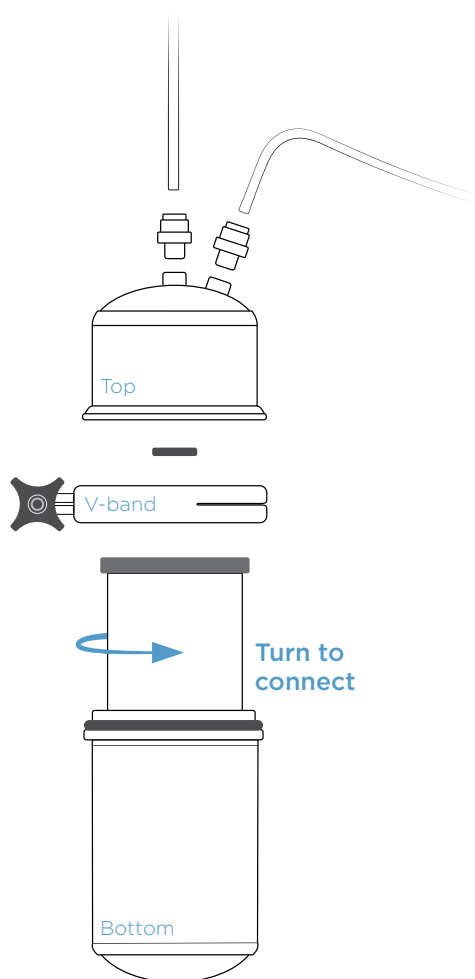
If you need help or assistance, feel free to contact your dealer or representative.

*\*Faucet is not included as part of the NSF Unit Testing*

# Preparing the Housing

Please prepare the housing as outlined in this section before moving on to Section 3. Be sure to gather all all recommended tools for the Stream Flow Plus below the sink installation before you begin.

## A. Filter Cartridge Installation



The filter cartridge is shipped outside of the unit housing (in most cases) to protect your filter and drinking water system from damage during shipping. Be sure to insert the filter cartridge into the drinking water system housing before proceeding with the installation.

First, remove the plastic wrapper and instruction wrap from around the filter.

- 1.** With the housing positioned upright, open the unit by unscrewing the black knob on the locking v-band. Spread it apart and remove the v-band.
- 2.** Separate the unit, leaving the black rubber o-ring in place on the housing.
- 3.** . Screw the new filter (cartridge) in the housing top, turning it until firm. Filter needs to make 4-5 complete revolutions in order to ensure a firm seal. Be sure that the filter has been screwed in straight. **DO NOT OVER TIGHTEN.**
- 4.** Reconnect the housing top with bottom and replace locking v-band; replace black knob and turn until tight. Be sure that the locking v-band is fastened tightly by:
  - a.** Checking the v-band to confirm that it is secured evenly around the housing top and bottom.
  - b.** Hand-tightening the black knob on the v-band until it is as tight as possible.

# Below the Sink Installation

## A. Required Tool List

The following tools are required to install Stream Flow Plus Drinking Water System below the sink:

### Installation of Faucet/Spigot (Stainless Steel Sink):

- 3/8" Reversible electric drill
- 7/16" High speed steel drill bit
- Hammer
- Center punch
- 8" Adjustable wrench
- Pliers or vise grips
- 1/8" High speed drill bit

### Installation of Faucet/Spigot (Ceramic/Porcelain Sink):

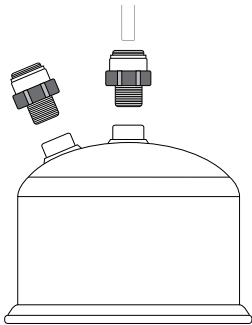
- 3/8" Reversible electric drill
- 7/16" High speed steel drill bit
- Hammer
- Center punch
- 8" Adjustable wrench
- Pliers or vise grips

### Adapt-a-Valve Installation:

- 8" Adjustable wrench
- Wire cutter or knife

## B. Attaching the Adapters to the Housing

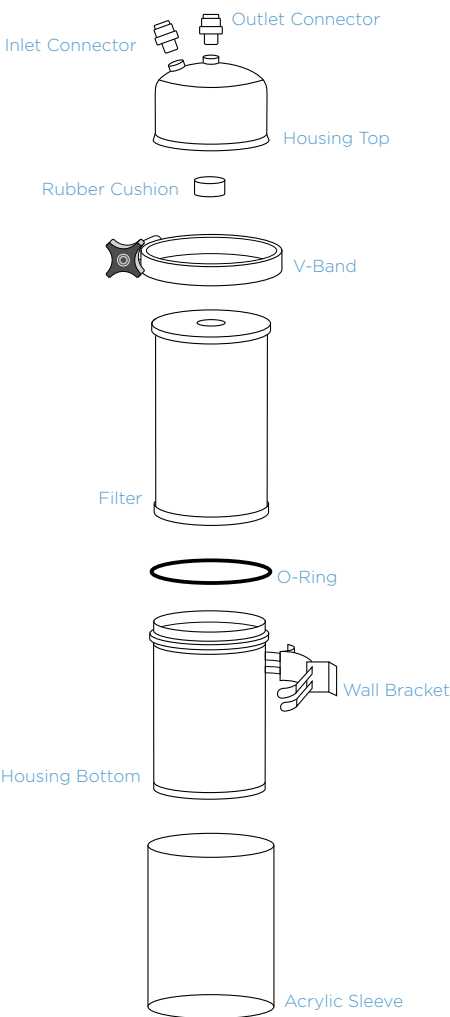
Stream Flow Plus models are shipped with all of the adapters and connectors needed for the filter system. Here is how to connect them to the housing top:



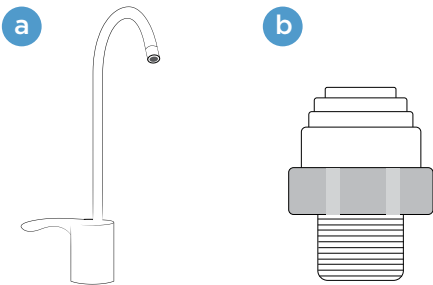
### To Connect Straight Adapters:

1. Connect the 1/4" outlet adapter to the outlet opening on the housing by turning it clockwise. You can tighten it by hand and then give it one to two more turns with a wrench.
2. Connect the 1/4" inlet adapter to the inlet opening on the housing by turning it clockwise. Again, tighten it by hand and then with a wrench.

# C. Housing Assembly

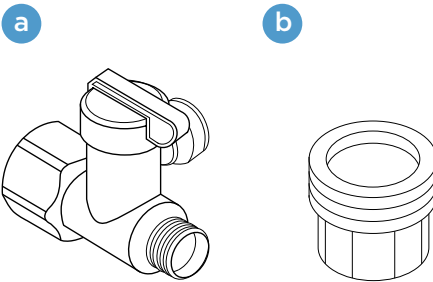


## Below Sink Installation Includes:



- a. Stainless Steel Faucet with blue tubing attached
- b. 1/4" Inlet and Outlet Connector

## Adapt-a-Valve Assembly:



- a. Adapt-a-Valve
- b. Threading Adapter

# Installing the Faucet

## A. Drilling the Hole



### Porcelain or Ceramic Surface

1. Choose and then mark the spot you'd like to mount the faucet on your sink top.
  - a. Make sure there aren't any reinforcing ribs under the spot you've selected.
  - b. If you have an extra hole in your sink for a spray hose, you can disconnect that hose and use its hole for your drinking water faucet.
2. Make an indentation with the center punch by tapping gently with the hammer on the ceramic/porcelain where the hole will be drilled.
3. Use the 1/2" carbide tipped masonry drill bit to grind the porcelain down to the metal so that you won't damage the porcelain when drilling.
4. Carefully use the 7/16" high speed steel drill bit to completely drill a hole through the metal sink. Make sure you don't let the drill bit "grab" the porcelain.



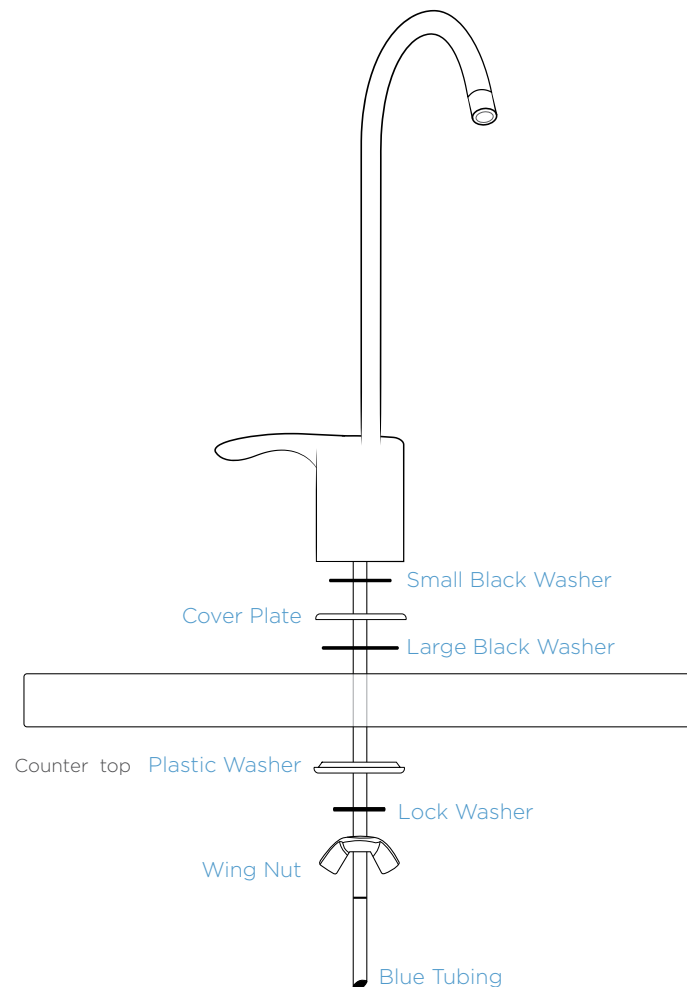
### Stainless Steel or Metal Surface

Here you can simply follow the same first two steps listed above, then:

1. Use the 1/8" high speed steel drill bit to drill a pilot hole.
2. Use the 7/16" high speed steel drill bit to completely drill a hole through the stainless steel sink.



## B. Mounting the Faucet



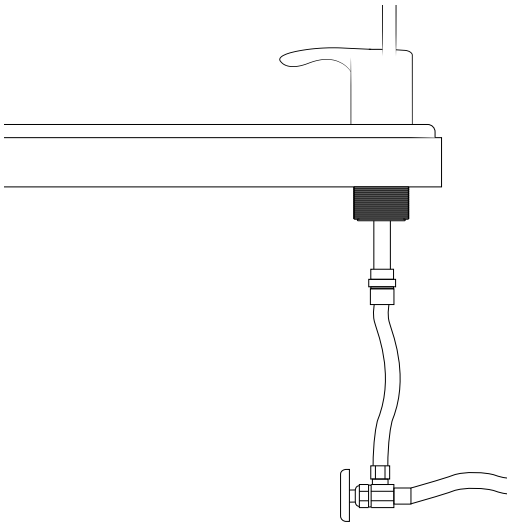
1. Make sure the blue tubing is attached to the faucet.
2. From the sink/counter top, place the following over the faucet hole:
  - a. The larger soft black rubber washer
  - b. The cover plate
  - c. The smaller soft black rubber washer
  - d. The faucet with blue tubing attached
3. From under the sink, slide over the blue tubing:
  - a. The hard black plastic washer (with the small side up)
  - b. The lock washer
  - c. The wing nut
4. Hand tighten the wing nut to secure the faucet. Using vice grips, secure the wing nut and faucet below the sink.

# Connect to Plumbing

The Adapt-a-Valve assembly includes an Adapt-a-Valve and adapter.

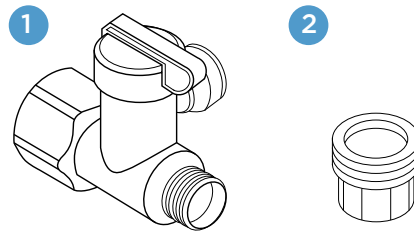
**NOTE:** When attaching the Adapt-a-Valve to straight pipe threads, use Teflon tape on the threads. Wrap the tape around the pipe only once.

## Before



Water supply line before installation

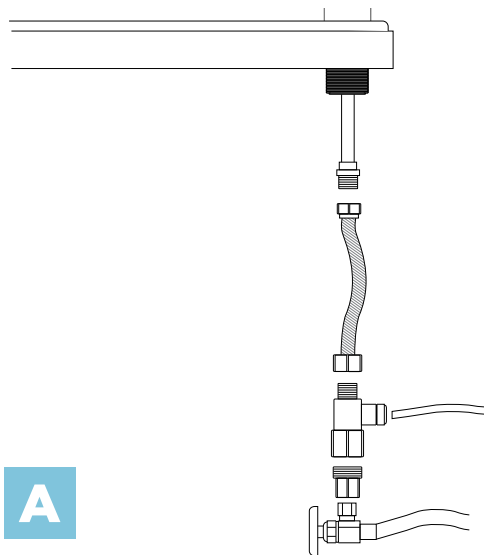
## Included



## After

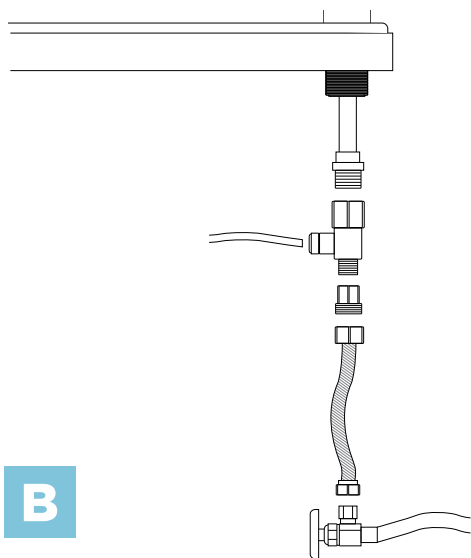
Choose the configuration (3/8" or 1/2") that fits your plumbing.

**A.** Use the 3/8" configuration on a water supply line with a 3/8" slip joint.



**A**

Water supply line with Adapt-a-Valve in 3/8" configuration



**B.** Use the 1/2" configuration if you have a water supply line that either does not have a slip joint nut, or has a 1/2" slip joint nut at the angle stop valve.

**B**

Water supply line with Adapt-a-Valve in 1/2" configuration

## Install on the cold water line only:

1. Turn the angle stop valve completely off to turn off the cold water supply.
2. Turn the slip joint nut counter clockwise with an 8" adjustable wrench to disconnect the cold water supply line. This will either be located at the angle stop valve or at your faucet pipe, depending on your plumbing.
3. With your wrench, connect the Adapta-a-Valve to the pipe where you removed the slip joint nut. Make sure the rubber washer is in place, and then turn it clockwise until it is tight, but not over-tight!
4. Connect the plumbing/supply line to the Adapta-a-Valve with the slip joint nut. If necessary, you can trim the supply line before connecting to make sure the supply line doesn't block the shut-off valve on the side.
5. Connect your 1/4" clear plastic tubing to the Adapta-a-Valve by inserting the tubing as far as it will go, through the same small hole in the adapter that you attached to the shut-off valve.
  - a. Cut (square cut) the tip ends off the tubing using a sharp knife. Do not use scissors.
  - b. Push the tubing through the small hole in the valve until you feel resistance—at this point, the tubing is still not fully inserted, so you'll need to push firmly until the tubing is inserted as far as it will go. Ultimately, the 1/4" clear tubing should be inserted about 5/8".
6. Make sure that the unit shut-off valve, attached to the Adapta-a-Valve, is off by turning the handle clockwise until it stops.

# Connect The Drinking Water System

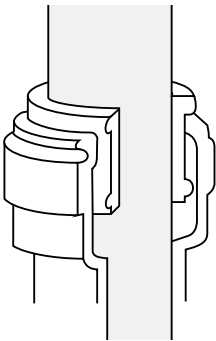
Now that you have installed the filter, adapters, and faucet and connected the device to the plumbing you are ready to complete the installation of your Stream Flow Plus Drinking Water System.

## A. Adapter Connection

If you have not already installed the adapters, see Section 3B on page 6.

## B. Tubing Connection

Be sure to provide sufficient tubing for conveniently changing the filter when it is time to replace it.



**1.** Using wire cutters or a knife, cut the tips off of both the blue tube connected to the faucet and the clear tube you previously connected to the plumbing.

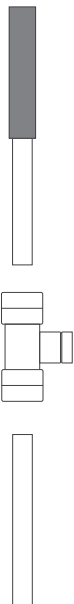
**2.** Insert the clear 1/4" plumbing tubing into the small hole in the inlet connector as far as it will go. Ultimately this 1/4" tubing should be inserted about 5/8". Then pull to make sure that the tubing is secure.

**Disconnecting the tubing:** If you ever need to disconnect the tubing for maintenance, you should first make sure that the system is depressurized. Push the collar against the face of the fitting; then you can remove the tubing.

## C. Ice Maker Connection

Not only can you use your Stream Flow Plus Drinking Water System for quality water at the sink, but you can also connect that same unit to your refrigerator for quality ice. Here's how:

### Connecting to Your Unit:



**1.** Determine whether or not you have access to your refrigerator from your sink.

**2.** Cut 3" from the end of the blue faucet tubing.

**3.** Insert the tubing still connected to the faucet into the top of the ice maker tee. Make sure you insert the tubing all the way—even past the point of resistance, and then pull to make sure it is secure. (Ultimately it should be inserted about 5/8".)

**4.** Insert one end of the loose blue tubing into the bottom port of the icemaker tee. Again, make sure you insert the tubing all the way—even past the point of resistance, and then pull to make sure it is secure. (Ultimately it should be inserted about 5/8".)

**5.** Connect the other end of the blue tubing to the outlet connector.

**6.** Connect a separate 1/4" poly tube (available through your dealer or a plumbing supplier) to the side port of the tee. Make sure you have enough tubing to reach your refrigerator and service unit.

## D. Placing Stream Flow Plus Under the Sink

You can either set your Stream Flow Plus System on the cabinet floor or mount the unit on the cabinet wall with the bracket included in your kit. If you do mount the unit on the cabinet wall, make sure it can support the unit's weight (about 7.5 with a dry filter and even more with a wet filter!).

Either way, be sure to provide enough tubing to conveniently change the filter when you need to.



1. Make sure you'll have enough room to remove the stainless steel housing from the bracket to change the filter in the future, before beginning installation.
2. Position the bracket so that you will be able to get to it when needed. Hold the bracket in place and then fasten it there with only the top screws. (Don't fasten the screws tight against the bracket—leave enough space to hang and later remove the bracket from the screws.)
3. Remove the bracket from the screws by lifting it straight up.
4. To install the **bracket bands** with worm screws, first unscrew the worm clamp by turning the screw with a slotted screwdriver counter clockwise until it is fully open.
5. Thread each band through the two **slots** on the bracket (there will be one for the top and one for the bottom slot).
6. Install the bands around the housing top, above the v-band. Position the slotted end of the band at the mouth of the worm clamp opening. Then turn the screw of the worm clamp clockwise; as you turn the screw, the band will close around the housing top until it is secured tightly. Repeat for the second band.
7. Attach the bracket and unit to the wall by "hanging" the bracket on the two screws you installed (Step 2).

# Start-up and Use

1. Dry off all the plumbing connections and the drinking water unit.
2. Make sure all of the connections are tight, but not over tight.
3. Turn on the shut-off valve under your sink where water enters your residence.
4. Turn the handle on the shut-off valve that you've installed (see Section 5) to turn on the water to your Drinking Water System.
5. Turn the operating lever to open the drinking water faucet.
6. Let the water run through the unit and faucet for about 10 minutes so that all air can escape.
7. Adjust the handle on the shut-off valve so that the water flow will be minimal (To be precise, it should not exceed 1.0 gpm. It takes about 15 seconds to fill a quart at 1.0 gallon per minute.)
8. Close the drinking water faucet and check for leaks.
  - a. Check the v-band to confirm that it is secured evenly around the housing top and bottom.
  - b. Hand-tighten the black knob on the v-band until it is as tight as possible.
9. Let the water run through the unit for about 30 minutes to flush any loose carbon fines.
10. Shut off the water and check for leaks.

**The Stream Flow Plus Drinking Water System is now ready for use. You can enjoy having great tasting, high quality water for drinking, cooking, beverages, food preparation, and more.**

## A. Filter Life

Filter life will vary depending on the amount of water used and the amount of impurities being processed in your water. If your Stream Flow Plus clogs, it may be because it is protecting you from the contaminants and physical matter in your drinking water. If this happens, see Section I.A - Operation and Maintenance Specifications.

For the best performance possible and to maintain your warranty, you should replace your filter when the first of the following occurs: (a) annually; (b) when you've reached the unit's rated capacity; (c) the flow rate slows or lessens; or (d) the filter starts to taste or smell bad.

# Performance Certification

MODEL - FP1

## Stream Drinking Water Systems Product Performance Tested and Certified



Stream Drinking Water System Tested by NSF International to NSF/ANSI Standards 42 and 53 for the reduction of claims specified below.

### Standard 42, Aesthetic Effects

- Chloramine
- Chlorine taste and odor
- Nominal Particulate Reduction, Class I

### Standard 53, Health Effects

- Asbestos
- Chlordane
- Cyst
- Lead
- Mercury
- MTBE
- PCB
- Toxaphene
- Turbidity
- VOC (listed below)

## Volatile Organic Chemicals (VOC) include:

### Disinfection By-Products

- chloropicrin
- haloacetonitriles (HAN):
  - bromochloroacetonitrile
  - dibromoacetonitrile
  - dichloroacetonitrile
  - trichloroacetonitrile
- haloketones (HK):
  - 1,1-dichloro-2-Propanone
  - 1,1-trichloro-2-Propanone
- trihalomethanes (THMs; TTHMs):
  - bromodichloromethane
  - bromoform
  - chloroform
  - dibromochloromethane
- tribromoacetic acid

### Pesticides

- carbofuran
- dibromochloropropane (DBCP)
- o-dichlorobenzene
- p-dichlorobenzene
- endrin
- ethylene dibromide (EDB)
- heptachlor
- heptachlor epoxide
- lindane
- methoxychlor

### Herbicides

- alachlor
- atrazine
- 2,4-D
- dinoseb
- pentachlorophenol
- 2,4,5-TP (silvex)

### Chemicals

- benzene
- carbon tetrachloride
- chlorobenzene
- 1,2-dichloroethane
- 1,1-dichloroethylene
- cis-1,2-dichloroethylene
- 1,2-dichloropropane
- cis-1,3-dichloropropylene
- ethylbenzene
- hexachlorobutadiene
- hexachlorocyclopentadiene
- simazine
- styrene
- 1,1,2,2-tetrachloroethane
- tetrachloroethylene
- toluene
- trans-1,2-dichloroethylene
- 1,2,4-trichlorobenzene
- 1,1,1-trichloroethane
- 1,1,2-trichloroethane
- trichloroethylene
- xylenes (total)

## Performance Data Sheets

MODEL - FP1



Stream Drinking Water Systems have been tested according to NSF/ANSI Standard No. 53 for reduction of the substances listed below. The concentration of the indicated substances in water entering the system was reduced to a concentration less than or equal to the permissible limit for water leaving the system, as specified in NSF/ANSI 53 Health Effects.

Substance	Percent Reduction	Influence Challenge Concentration	Maximum permissible product water concentration
<b>ALACHLOR*</b>	>98%	0.05	0.001
<b>ASBESTOS*</b>	>99%	10 <sup>7</sup> to 10 <sup>8</sup> fibers/L	99% reduction requirement
<b>ATRAZINE*</b>	>97%	0.1	0.003
<b>BENZENE*</b>	>99%	0.081	0.001
<b>BROMODICHLOROMETHANE (TTHM)*</b>	>99.8%	0.3	0.015
<b>BROMOFORM (TTHM)*</b>	>99.8%	0.3	0.015
<b>CARBOFURAN (Furadan)*</b>	>99%	0.19	0.001
<b>CARBON TETRACHLORIDE*</b>	98%	0.078	0.0018
<b>CHLORDANE</b>	>99.4%	0.04 +/- 10%	0.002
<b>CHLOROBENZENE (Monochlorobenzene)</b>	>99%	0.077	0.001
<b>CHLOROPICRIN*</b>	99%	0.015	0.0002
<b>CHLOROFORM (TTHM)* (surrogate chemical)</b>	>99.8%	0.300 +/- .30	0.015
<b>Cryptosporidium (CYST)</b>	99.95%	minimum 50,000/ml	99.95%
<b>CYST (Giardia; Cryptosporidium; Entamoeba; Toxoplasma)</b>	99.95%	minimum 50,000/ml	99.95%
<b>2, 4-D*</b>	98%	0.110	0.0017
<b>DBCP (see Dibromochloropropane)*</b>	>99%	0.052	0.00002
<b>1, 2-DCA (see 1, 2-DICHLOROETHANE)*</b>	95%	0.088	0.0048
<b>1, 1-DCE (see 1, 1-DICHLOROETHYLENE)*</b>	>99%	0.083	0.001
<b>DIBROMOCHLOROMETHANE (TTHM; Chlorodibromomethane)*</b>	>99.8%	0.300	0.015
<b>DIBROMOCHLOROPROPANE (DBCP)*</b>	>99%	0.052	0.00002
<b>o-DICHLOROBENZENE (1, 2 Dichlorobenzene)*</b>	>99%	0.08	0.001
<b>p-DICHLOROBENZENE (para-Dichlorobenzene)*</b>	>98%	0.04	0.001
<b>1, 2-DICHLOROETHANE (1, 2-DCA)*</b>	95%	0.088	0.0048
<b>1, 1-DICHLOROETHYLENE (1, 2-DCE)*</b>	>99%	0.083	0.001
<b>CIS-1, 2-DICHLOROETHYLENE*</b>	>99%	0.17	0.0005
<b>TRANS-1, 2-DICHLOROETHYLENE*</b>	>99%	0.086	0.001
<b>1, 2-DICHLOROPROPANE (Propylene Dichloride)*</b>	>99%	0.08	0.001
<b>CIS-1, 3-DICHLOROPROPYLENE*</b>	>99%	0.079	0.001
<b>DINOSEB*</b>	99%	0.17	0.0002
<b>EDB (see ETHYLENE DIBROMIDE)*</b>	>99%	0.044	0.00002
<b>ENDRIN*</b>	99%	0.053	0.00059
<b>Entamoeba (see CYSTS)</b>	99.95%	minimum 50,000/ml	99.95%
<b>ETHYLBENZENE*</b>	>99%	0.088	0.001
<b>ETHYLENE DIBROMIDE (EDB)*</b>	>99%	0.044	0.00002
<b>Furadan (see CARBOFURAN)*</b>	>99%	0.19	0.001
<b>Giardia Lamblia (see CYST)</b>	>99.95%	minimum 50,000/ml	99.95%

\*\* Percent reduction reflects actual performance of Stream product as specifically tested (at 200% of capacity). Percent reduction shown for VOCs\* reflects the allowable claims for volatile organic chemicals/compounds as per tables. Chloroform was used as a surrogate for VOC reduction claims; the Stream Systems actual reduction rate of chloroform was >99.8% as tested.



<b>HALOACETONITRILES (HAN)*:</b>			
<b>BROMOCHLOROACETONITRILE</b>	98%	0.022	0.0005
<b>DIBROMOACETONITRILE</b>	98%	0.024	0.0006
<b>DICHLOROACETONITRILE</b>	98%	0.0096	0.0002
<b>TRICHLOROACETONITRILE</b>	98%	0.015	0.0003
<b>HALOKETONES (HK)*:</b>			
<b>1, 1-DICHLORO-2-PROPANONE</b>	99%	0.0072	0.0001
<b>1, 1, 1-TRICHLORO-2-PROPANONE</b>	96%	0.0082	0.0003
<b>HEPTACHLOR*</b>	>99%	0.025	0.00001
<b>HEPTACHLOREPOXIDE*</b>	98%	0.0107	0.0002
<b>HEXACHLOROBUTADIENE</b> (Perchlorobutadiene)*	>98%	0.044	0.001
<b>HEXACHLOROCYCLOPENTADIENE*</b>	>99%	0.060	0.000002
<b>LEAD</b> (pH 6.5)	>99.3%	0.15 +/- 10%	0.010
<b>LEAD</b> (pH 8.5)	>99.3%	0.15 +/- 10%	0.010
<b>LINDANE*</b>	>99%	0.055	0.00001
<b>MERCURY</b> (pH 6.5)	96.6%	0.006 +/- 10%	0.002
<b>MERCURY</b> (pH 8.5)	96.8%	0.006 +/- 10%	0.002
<b>METHOXYCHLOR*</b>	>99%	0.050	0.0001
Methylbenzene (see TOLUENE)*	>99%	0.078	0.001
Monochlorobenzene (see CHLOROBENZENE)*	>99%	0.077	0.001
<b>MTBE (methyl tert-butyl ether)</b>	96.6%	0.015 +/- 20%	0.005
<b>POLYCHLORINATED BIPHENYLS</b> (PCB, Aroclor 1260)	97.2%	0.01 +/- 10%	0.0005
PCE (see TETRACHLOROETHYLENE)*	>99%	0.081	0.001
<b>PENTACHLOROPHENOL*</b>	>99%	0.096	0.001
Perchlorobutadiene (see HEXACHLOROBUTADIENE)*	>98%	0.044	0.001
Propylene Dichloride (see 1, 2-DICHLOROPROPANE)*	>99%	0.080	0.001
<b>SIMAZINE*</b>	>97%	0.120	0.004
Silvex (see 2, 4, 5-TP)*	99%	0.270	0.0016
<b>STYRENE</b> (Vinylbenzene)*	>99%	0.15	0.0005
1, 1, 1-TCA (see 1, 1, 1-TRICHLOROETHANE)*	95%	0.084	0.0046
TCE (see TRICHLOROETHYLENE)*	>99%	0.180	0.0010
<b>1, 1, 2, 2-TETRACHLOROETHANE*</b>	>99%	0.081	0.001
<b>TETRACHLOROETHYLENE*</b>	>99%	0.081	0.001
<b>TOLUENE</b> (Methylbenzene)*	>99%	0.078	0.001
<b>TOXAPHENE</b>	>92.9%	0.015 +/- 10%	0.003
Toxoplasma (see CYSTS)	99.95%	minimum 50,000/ml	99.95%
<b>2, 4, 5-TP (Silvex)*</b>	99%	0.270	0.0016
<b>TRIBROMOACETIC ACID*</b>		0.042	0.001
<b>1, 2, 4 TRICHLOROENZENE*</b>	>99%	0.160	0.0005
<b>1, 1, 1-TRICHLOROETHANE</b> (1,1,1-TCA)*	95%	0.084	0.0046
<b>1, 1, 2-TRICHLOROETHANE*</b>	>99%	0.150	0.0005
<b>TRICHLOROETHYLENE</b> (TCE)*	>99%	0.180	0.0010
<b>TRIHALOMETHANES</b> (TTHM) (Chloroform; bromoform; bromodichloromethane; dibromochloromethane)	>99.8%	0.300 +/- .30	0.015
<b>TURBIDITY</b>	98.8%	11 +/- 1 NTU	0.5 NTU
Unsym-Trichlorobenzene*	>99%	0.160	0.0005
Vinylbenzene (see STYRENE)*	>99%	0.150	0.0005
<b>XYLENES</b> (TOTAL)*	>99%	0.070	0.001

**Note:** This addresses the U.S. Environmental Protection Agency (USEPA) Primary and Secondary Drinking Water Regulations in effect at its time of publication, as they relate to Stream's performance in conformance to the industry performance criteria. These regulations are continually being updated at the Federal level. Accordingly, this list of MCLs will be reviewed and amended when appropriate.

## A. NSF/ANSI 42 - AESTHETIC EFFECTS

The system has been tested according to NSF/ANSI 42 for reduction of the substances listed below. The concentration of the indicated substances in water entering the system was reduced to a concentration less than or equal to the permissible limit for water leaving the system, as specified in NSF/ANSI 42.

<b>CHLORAMINE as Aesthetic Effect (As Monochloramine)</b>	>97%	3.0 mg/L +/- 10%	0.5 mg/L
<b>CHLORINE as Aesthetic Effect</b>	>97%	2.0 mg/L +/- 10%	> or = 75%*
<b>PARTICULATE</b> , (Normal Particulate Reduction, Class I, Particles 0.5 TO <1 UM	Class I >99%	At Least 10,000 particles/mL	> or = 85%*

1. Stream Drinking Water Systems have been tested by NSF International for compliance to NSF/ANSI Standard Nos. 42 and 53. Stream Drinking Water Systems have been certified by the State of California Department of Public Health for the reduction of specific contaminants listed herein.
2. Chloroform was used as a substitute for claims of reduction of VOCs, where the Stream System's actual reduction rate of chloroform was greater than 99.8% when tested at 200% capacity.
3. **Do not use with water that is microbiologically unsafe or of unknown quality without adequate disinfection before or after the system. Systems certified for cyst reduction may be used on disinfected waters that may contain filterable cysts.**
4. Stream's housing is warranted for a lifetime (with annual cleaning); all exterior hoses and attachments to the System are warranted for one year. Please see the owner's manual for complete product guarantee and warranty information.
5. Please see the Owner's Manual for installation and operating procedures.
6. In compliance with New York law, New York residents should have their water supply tested to determine their actual water treatment needs before purchasing a water treatment system. Please compare the capabilities of the Stream unit with your actual water treatment needs.
7. While testing was performed under standard laboratory conditions, actual performance may vary.
8. The list of substances that this device reduces does not necessarily mean that they are present in your tap water.

## B. Operational Specifications

<b>Model Number:</b>	Stream Flow Plus (FP1)
<b>Replacement Filter Type:</b>	Stream Flow Cartridge (FC1)
<b>Approximate Filter Capacity:</b>	750 gallons
<b>Approximate Flow Rate at 60 psi:</b>	0.75 gpm
<b>Maximum Working Pressure:</b>	100 psi / 8.8 kg/cm <sup>2</sup>
<b>Minimum Working Pressure:</b>	30 psi / 2.1 kg/cm <sup>2</sup>
<b>Maximum Operating Temperature:</b>	100° F / 38° C for cold water use only
<b>Minimum Operating Temperature:</b>	32° F / 0° C for cold water use only

# C. California Certification Department of Public Health

California Department of Public Health Certification Number #13-2190. For conditions of use, health claims certified by the CA Department of Public Health, and replacement parts, see Product Data Sheet / Owner's Manual.

State of California Department of Public Health

## Water Treatment Device

### Certificate Number

13-2190

Date Issued: October 3, 2013

#### Trademark/Model Designation

Stream Flow FL

Stream Flow Plus FPL

#### Replacement Elements

FC1

FC1

**Manufacturer: Stream Laboratories, Inc.**

The water treatment device(s) listed on this certificate have met the testing requirements pursuant to Section 116830 of the Health and Safety Code for the following health related contaminants:

#### Microbiological Contaminants and Turbidity

Cysts

Turbidity

#### Inorganic/Radiological Contaminants

Asbestos

Lead

Mercury

#### Organic Contaminants

Alachlor

Atrazine

Benzene

Carbofuran

Carbon Tetrachloride

Chlorobenzene

Chloropicrin

2,4-D

DBCP

o-Dichlorobenzene

p-Dichlorobenzene

1,2-Dichloroethane

1,1-Dichloroethylene

cis-1,2-Dichloroethylene

trans-1,2-Dichloroethylene

1,2-Dichloropropane

cis-1,3-Dichloropropylene

Dinoseb

Endrin

Lindane

Ethylbenzene

EDB

Haloacetonitriles

Bromochloroacetonitrile

Dichloroacetonitrile

Dibromoacetonitrile

Trichloroacetonitrile

Haloketones (HK)

1,1-Dichloro-2-Propanone

1,1,1-Trichloro-2-Propanone

Heptachlor

Heptachlor Epoxide

Hexachlorobutadiene

Hexachlorocyclopentadiene

Lindane

Methoxychlor

MTBE

Pentachlorophenol

PCB

Simazine

Styrene

1,1,2,2-Tetrachlorethane

Tetrachloroethylene

Toluene

Toxaphene

2,4,5-TP (Silvex)

Tribromoacetic Acid

1,2,4-Trichlorobenzene

1,1,1-Trichloroethane

1,1,2-Trichloroethane

Trichloroethylene

Trihalomethanes (THM's)

Bromodochloromethane

Bromoform

Chloroform

Chlorodibromomethane

Xylenes

**Rated Service Capacity: 750 gallons**

**Rated Service Flow: 0.75 gpm**

#### Conditions of Certification

Do not use where water is microbiologically unsafe or with water of unknown quality, except that systems for cyst reduction may be used on disinfected waters that contain filterable cysts.

**Stream Laboratories, Inc.**

2520 Shell Road Ste B

Georgetown, TX 78628

Phone: (888)-615-5733

# Troubleshooting & FAQs

## A. Troubleshooting & FAQs

Question	Answer	Comments
<b>When should I replace my filter cartridge?</b>	You should replace your filter annually or when the capacity is reached, whichever occurs first (for rated capacity see Section 1A).	Filter life will vary depending on the amount of water used and the amount of impurities in the water.
<b>Where do I get a replacement filter?</b>	You can order replacement filters from your local water treatment dealer.	N/A
<b>Will low pH or acidic water affect the Stream filter?</b>	No.	Mineral components expressed as acidity and alkalinity determines the pH. Neutrality is 7; below 7 is acidity; and above 7 is alkalinity.
<b>Does de-ionized water or soft water affect Stream water?</b>	No.	N/A
<b>Can the Stream Flow Plus System be connected to an automatic ice maker?</b>	Yes, the below sink models can be connected to your sink, refrigerator, and/or any kind of water dispenser or ice maker.	To connect a single Drinking Water System to both your sink and refrigerator, request an "ice maker tee" from your dealer.
<b>Can the Stream Flow Plus System be used during an emergency or when the water is turned off?</b>	Yes, you can hand pump or siphon water through the Stream System during an emergency. But remember, the Stream System isn't meant to be used where the water is microbiologically unsafe or with water of unknown quality.	If your water source might be contaminated, it should be disinfected before use. Add 1/4 tsp of household bleach per gallon of water; the Stream System will remove this solution from the water. Hand pump kits are available from Stream.
<b>What causes "white" particles to appear in Stream water when it is frozen or boiled?</b>	When water is frozen, the natural minerals solidify and they can appear as white flakes or specks when the ice melts.	Natural minerals are good for you in normal quantities, and so when you see them in your drinking water, don't be alarmed. If you'd like, you can remove these minerals with reverse osmosis technology; just ask your dealer.
<b>Why does the Stream System reduce volatile organic compounds, but not natural minerals?</b>	Minerals are totally dissolved in the solution and do not have an actual physical size, and so the minerals pass through the filter unchanged.	The materials used in Stream Drinking Water Systems are specially designed to react with chemicals in the water, but not with natural minerals that are actually good for you.
<b>Should I remove sediment with a standard filter before using Stream?</b>	If you are in an area with excessive sedimentation in the water, pre-filtering can help extend the life and efficiency of your Stream cartridge, but in most areas this is not necessary.	The Stream System contains a triple filter. The outside material is a pre-filter that helps protect the solid carbon block surface from clogging with large sediment.
<b>Why is the compressed activated carbon block filtration system more efficient than loose granular systems?</b>	Stream's solid carbon block filters are compacted into a dense structure so that every molecule of water will be forced through tiny pores of carbon. This reduces a wide range of hazardous contaminants, as well as tastes and odors, not typically removed by loose granular systems.	The Water Quality Association reports that "an activated carbon filter can reduce organics and solid particles, as well as offensive tastes and odors. Only pre-coat and solid carbon block filters are designed to provide 0.5 micron mechanical filtration with efficient adsorption on very fine sized activated carbon particles."

Question	Answer	Comments
<b>What is the difference between a “water softener” and the Stream Drinking Water System?</b>	Softeners are not used to treat drinking water; they are used only to change the water’s “hardness.” They put sodium into the water in exchange for magnesium or calcium ions. Stream Drinking Water Systems don’t remove dissolved minerals so the pH is not changed.	Soft water is good for bathing, laundering, and may extend the life of hot water heaters and boilers. However, soft water should not be used for watering plants or lawns. You should not use a water softener when using your Stream Drinking Water System.
<b>Can the Stream System be used on untreated water?</b>	If the water source is questionable, you should disinfect it before use. Just add 1/2 tsp of bleach per gallon of water; then the Stream System will remove this solution from the water. Ask your nearest public water utility for assistance or guidelines on the proper treatment of untreated water.	Stream Systems are designed to be used on treated water systems; they are not meant to be used where the water is unsafe or with water of unknown quality without first disinfecting the water. However, systems certified for cyst reduction can be used on water that may contain filterable cysts.
<b>What should I do if my water starts to smell or taste bad?</b>	Change your filter.	The carbon block filter may adopt the tastes and odors that it is absorbing.
<b>What does it mean if my water starts to smell like rotten eggs?</b>	This is typically a sign of hydrogen sulfide gas, which is not uncommon and can occur at any time.	You should keep 2 filters on hand. When one begins to smell, remove it and let it dry upside down on a paper towel. Once the sulfur smell dissipates, you can reuse the filter. Rotating filter cartridges like this will also help extend the life of your filters.
<b>What does it mean if there is a “milky” color in my water?</b>	This milky color is actually just small bubbles, caused by a higher than normal water pressure flowing through the system. This won’t affect the performance of the System.	Just reduce the water pressure at the feed water adapter below the sink.
<b>What do I do if the flow rate is too slow?</b>	The filter is designed to slow and restrict flow when the filter is clogged with contaminants. When the flow rate slows, it is time to change your filter.	You should replace your filters at least every twelve months, or when its capacity is reached, whichever comes first. You can also try turning up the water pressure or turning off other faucets or sprinklers that may be on.
<b>What should I do if my water is black?</b>	Allow the water to run through the unit for about 30 minutes.	The black color is from carbon dust and is nothing to worry about. Simply flush the system.

## B. Maintenance Problems

### Flushing/Disinfecting the Unit Housing:

You should not let water sit for more than 10 days without being used. If you do, the System may need to be flushed or disinfected before you start using it again.

1. Make sure the water to the unit is turned off.
2. Lessen the water pressure (if below sink unit) by opening the unit faucet.
3. Remove and throw out the used filter.
4. Rinse out the inside of the unit's housing.
5. Add 5 to 7 drops of bleach, like Clorox™ or Purex™, to the bottom canister.
6. Reconnect the housing top and bottom without the replacement filter.
7. Turn on the water and let the unit housing fill up with the water/bleach solution.
8. Let the unit soak for at least 30 minutes.
  - a. To disinfect the spout, remove it and put it in a container with 1 quart of water and 5 drops of bleach. Allow this to soak for 30 minutes.
9. After the housing has soaked for 30 minutes, disassemble the top and bottom and pour out the water/bleach solution; then rinse out the inside of the housing.
10. Replace the filter (cartridge).
11. Once the new filter is installed, follow the instructions to reconnect and flush your unit.

# Warranty

Stream believes in improving your water and your life, which is why we've tailored our warranty for you—to make your life just a little bit easier.

Stream will repair or replace any System at absolutely no charge (barring the transportation to Stream headquarters) during the warranty period. On top of that, all exterior hoses and attachments to the System are warranted for defects in material and workmanship for one year, and your Drinking Water System Housing is warranted for a lifetime, while you're changing the filter once a year. That's a lifetime of clean water.

The Stream solid carbon block filters are warranted for defects in material and workmanship under normal care.

Unless it is expressly stated above, Stream Corporation makes no warranties, expressed or implied, arising by law or otherwise. This includes the implied warranties of merchantability and fitness for a particular purpose, to any person. This limited warranty may not be changed or extended unless it is expressly executed by Stream Corporation. The repair or replacement as provided under this limited warranty is exclusive. In no event will Stream Corporation be liable for any consequential or incidental damages to any person, including in cases of manufacturer negligence. This includes, without limitation, damages of loss of use, cost of substitution, property damage, or other monetary loss.

The warranty is only valid if the Drinking Water System is operated within conditions listed herein.

---

**Stream Laboratories, Inc.**  
2520 Shell Road Ste B  
Georgetown, TX 78628

Phone: (888)-615-5733

